

MONTHLY MEMBERSHIP PROGRESS REPORT

District 325 N

Results as of: 5/31/2026

GMT:

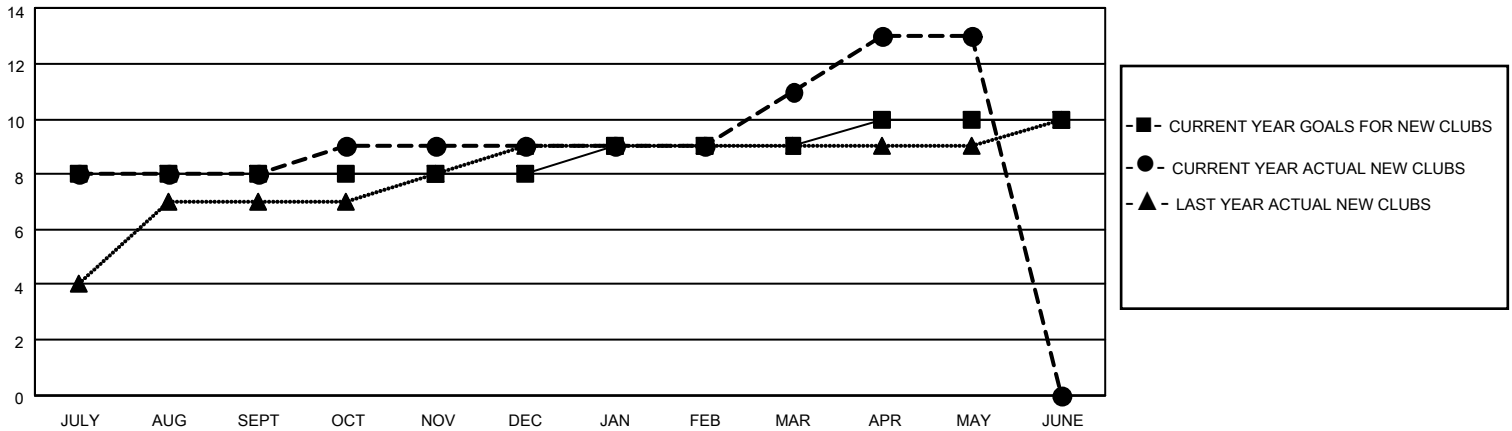
LOCATION NEPAL

GMT CA

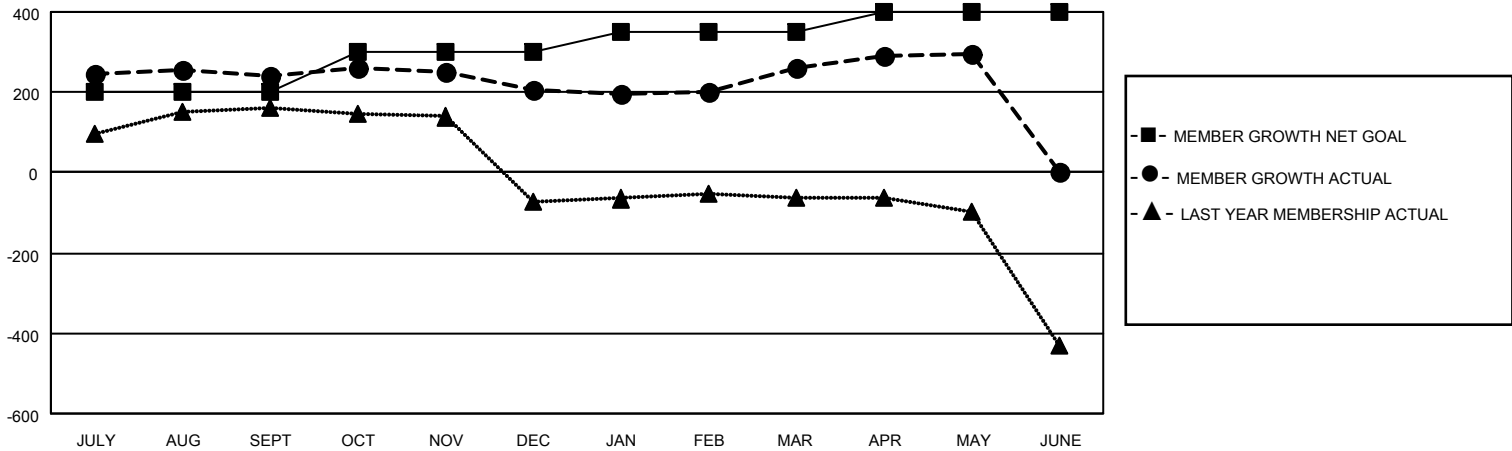
Clubs			
RESULTS FOR 2025-2026			
QUARTER	NEW CLUB GOAL	NEW CLUBS	DROPPED CLUBS
JULY/AUG/SEPT	8	8	2
OCT/NOV/DEC	0	1	1
JAN/FEB/MAR	1	2	0
APR/MAY/JUNE	1	2	0

Members			
RESULTS FOR 2025-2026			
QUARTER	MEMBER GROWTH NET GOAL	MEMBER GROWTH ACTUAL	DROPPED MEMBERS ACTUAL (including transfers)
JULY/AUG/SEPT	200	314	44
OCT/NOV/DEC	100	40	74
JAN/FEB/MAR	49	80	25
APR/MAY/JUNE	50	77	38

GOALS AND ACTUAL NEW CLUBS CUMULATIVE



GOALS AND ACTUAL MEMBERS CUMULATIVE



DROPPED CLUBS: 3 DROPPED MEMBERS DECEASED 0 CLUB CANCELLED 7 OTHER 172 TOTAL 179	74 CLUBS OF 129 ADDED 1 OR MORE NEW MEMBERS	GENDER DISTRIBUTION MALE 1,690 (73.48%) FEMALE 610 (26.52%)
	CLICK HERE FOR CUMULATIVE MEMBERSHIP DATA	TOTAL FAMILY UNIT MEMBERS 1,286 FAMILY MEMBERS PAYING HALF DUES 834